



Sprinkler Release IP67

Salwico MCP-SPR-A

(GB)

Part no. 5200037-01A

G003007

System: CS3000, CS3004, CS4000, Salwico Cargo, Salwico Cruise, Salwico Ro/Pax, Salwico Workboat, Salwico Yacht

General Description

The MCP-SPR-A is a push button for outdoor environment and designed for the Salwico addressable fire alarm systems.

The selected material PC/ABS and the encapsulation, with ingress protection IP67, makes it very suitable for harsh environment.

Pressing the glass causing it to crack activates the sprinkler release. A protective plastic coating on the glass prevents operator injury.

An LED on the front of the push button indicates the fire alarm. The LED remains lit until the fire alarm has been reset on the fire alarm panel.

The push button can be tested with a special key included in the delivery.

The address of the push button is set with a DIP-switch.

The MCP-SPR-A provides short-circuit protection via connections 1–4 and no short-circuit protection via connections 5–8.

Data

Nominal voltage	34 VDC
Working voltage	20–38 VDC
Supervising current	0.2 mA
Alarm current	2.5 mA
Ingress protection	IP67
Temperature range	-25°C to +70°C
Ambient humidity	0 to 95% RH
Material	PC/ABS
Colour	Blue, RAL3001
Weight	240 g
Cable dimension	Ø6–12 mm

Certified according to

EN 54-11, EN 54-17



2531/yy

yy = year of production

Spare glasses (10pcs.)

Part no. 5200077-00A

Connection

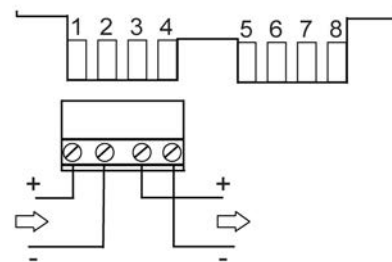
Connection of this call point depends on its function in the fire alarm system. The different alternatives are illustrated below.

Connection with short-circuit protection



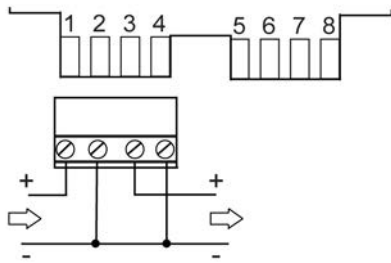
NOTE!

Connection with short-circuit protection is not applicable for system CS3000 or CS3004.



G003213

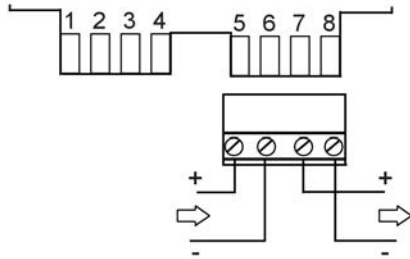
Figure 1. Connection with short-circuit protection for system Salwico Cargo, Salwico Cruise, Salwico Workboat, Salwico Yacht and Salwico RoPax



G003663

Figure 2. Connection with short-circuit protection for system CS4000

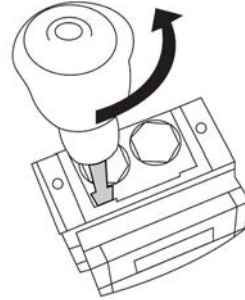
Connection without short-circuit protection



G003771

Figure 3. Connection without short-circuit protection for system Salwico Cargo, Salwico Cruise, Salwico Workboat, Salwico Yacht, Salwico RoPax, CS3000, CS3004, CS4000. Normal connection as spare part.

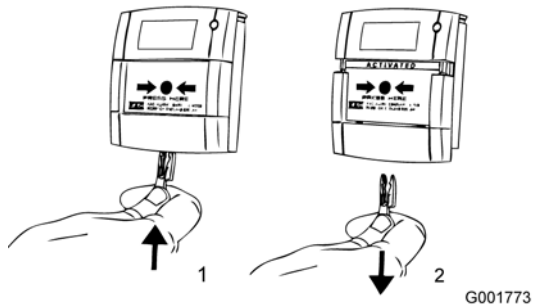
Cover removal



G003072

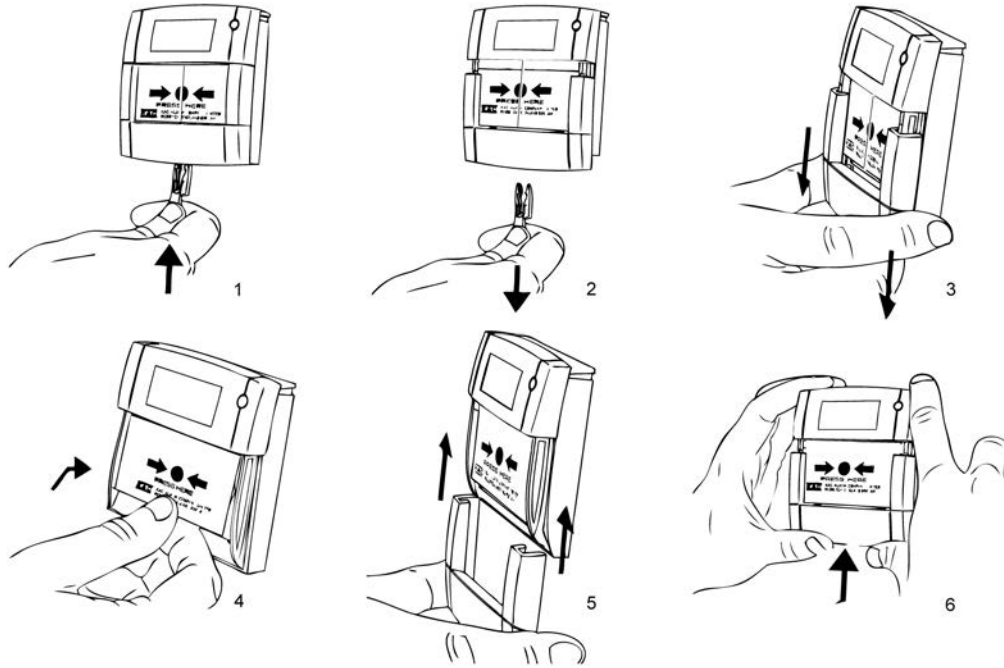
1. Remove the four cover fixing screws.
2. Place the edge of a large flat bladed screwdriver into the slot between the cover and back box, as shown in picture, and gently twist until the latches are disengaged.
3. Pull cover away from the back box.

Test



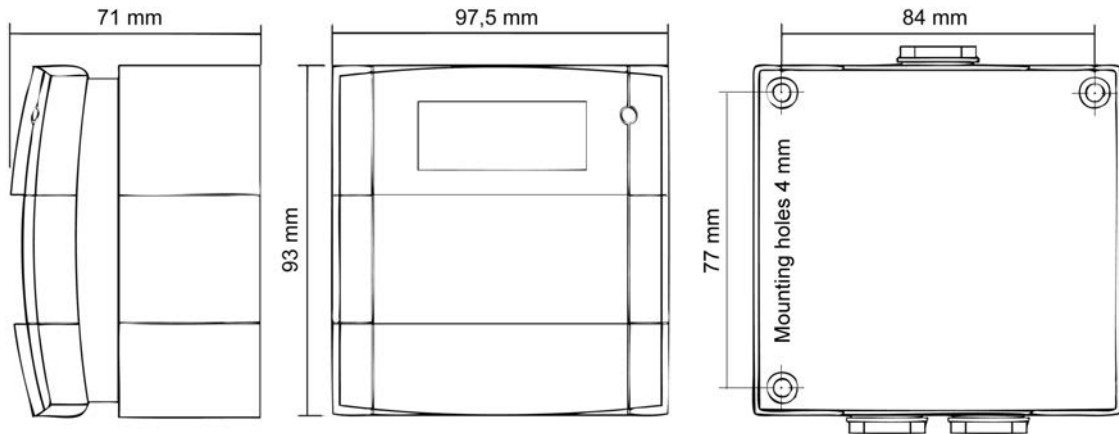
G001773

Change Glass



G001779

Dimensions (mm)



G001782