

G003186

System: ServoFighter, Salwico Cargo

Detector adapter for wet spaces

Salwico EC-ADAPT

Part no. 5200178-00A

General Description

The EC-Adapt is a connection adapter with an integrated 470Ohm serial resistor for installation of EC-type detectors on the IP55 base NS-2IP55 (part no. 46900) or 2IP55 (part no. 46950).

This adapter is used for connection of EC-type detectors to the conventional fire alarm system, in an IP55 environment.

Features

- IP55 Ingress protection
- Compatible with all detectors from EC- range
- Tamper resistant feature
- Detector removal detection
- Remote LED Option

Data

Environmental Specifications

Application Temperature Range	-30°C to +70°C
Humidity	5% to 95% Relative Humidity (non-condensing)

Mechanical Information

Height	44mm
Diameter	107mm
Weight	132g
Wire Gauge for Terminals	0.4mm ² to 2.0mm ²
Colour	Approximates to RAL9016
Material	PC and ABS
IP Rating	IP55 (With base)

Certificates

Certified according to



0832/YY

yy = year of production

OEM Part no.

I56-3771-000

Base Mounting and Wiring Instructions

See Connection for terminal connections.

Sensor LED position marked by diode symbol and arrow on base wall. See (*) on Base diagram in Connection.



NOTE!

Do not loop wire under terminals. Break the wire run to ensure supervision of connections.

All wiring must conform to applicable local and national codes and regulations.

Each EC-Base is fitted with a shorting spring to connect across terminals 1 and 2 to permit loop wiring to be checked before installation of sensor heads. This spring automatically disengages when the sensor is fitted into the base.



WARNING!

Remove power from sensor monitoring circuits before installing sensors.

Tamper-Resistance

The removal of the small plastic tab on the base indicated in [Figure 1](#), prevents the removal of the sensor head without a tool.

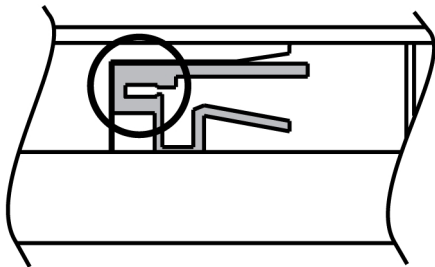


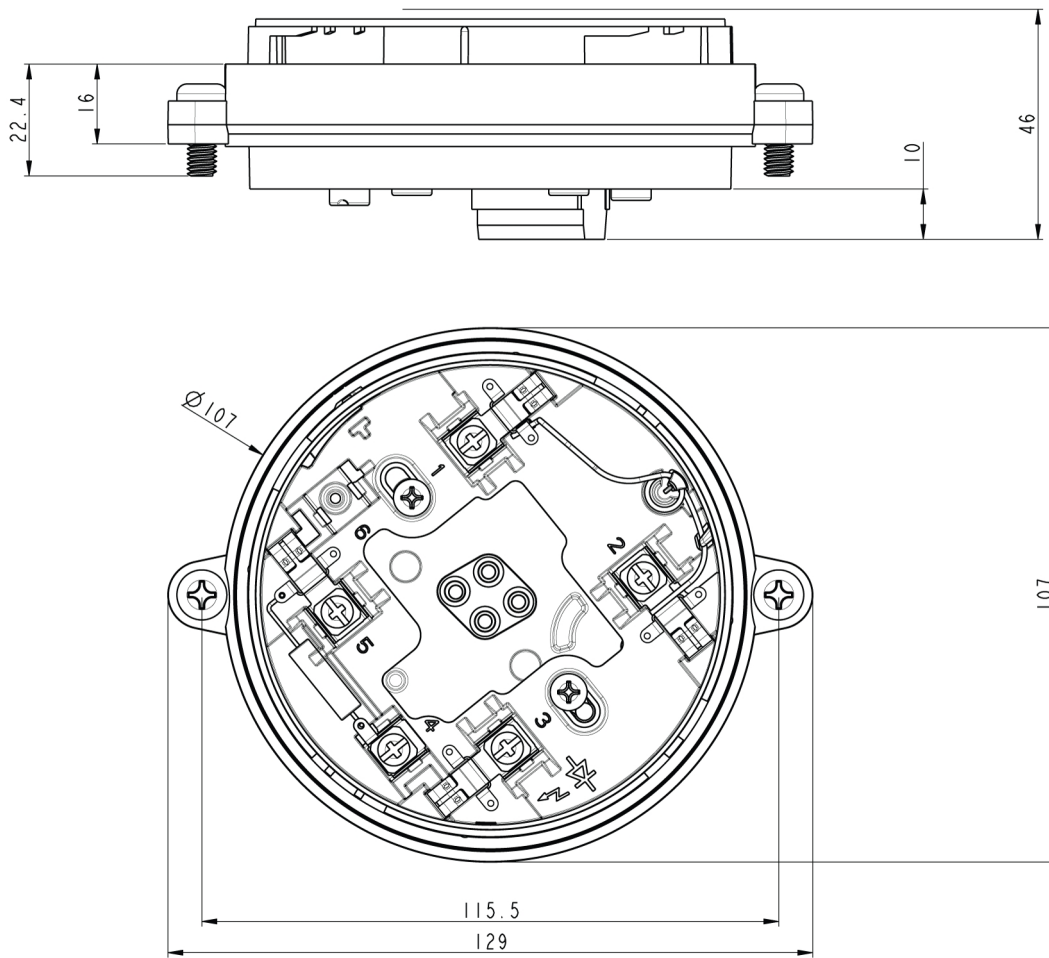
Figure 1. Tamper tab



CAUTION!

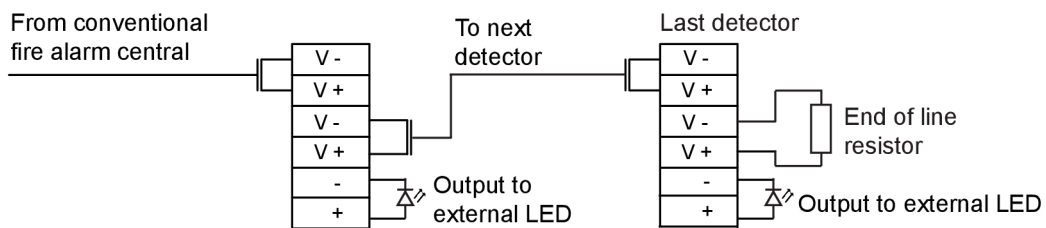
The detector will not be detachable from the base once the tamper tab is removed.

Dimensions (mm)



G003546

Connection



G003545