



G003169

System: ServoFighter, Salwico Cargo

Conventional Optical Smoke/Heat Detector

Salwico EC-PH/A1R

58°C

Part no. 5200176-00A

General Description

The EC-PH/A1R multi-criteria detector belongs to EC range of detectors. Salwico EC is a range of conventional detectors, which have been produced using the latest in manufacturing technology and supplied with an array of advanced features, making them 'better by design'.

The EC-PH/A1R multi-criteria detector uses a state of the art optical chamber and a thermal element combined with a microprocessor, running sophisticated algorithms to provide quick and accurate detection of fires. The combination of photoelectric and thermal characteristics provides a faster response to 'real fire' situations, while at the same time reducing the risk of unwanted environmentally generated alarms.

Features

- Low profile design
- Low current draw
- Automatic drift compensation
- Remote alarm test feature
- Easy Maintenance
- Range of detector bases available
- Remote LED Option
- Approved to EN54 – 7:2000 (Amendment 1)
- EN54 – 5:2000 (Amendment 1) Class A1R; CEA 4021

Data

Electrical Specifications

Operating voltage range	8 – 30 V DC
Maximum standby current at 25 °C	75 µA at 24 V DC
Maximum permissible alarm current	80 mA (current limited by control panel)
Alarm current at 24 V DC	Max 33 mA (with EC-BASE or EC-ADAPT)

Environmental Specifications

Operating temperature range	-30 °C to +70 °C
Ambient humidity	5% to 95% RH (non-condensing)

Mechanical Information

Height	40.5 mm (plus 9.5 mm for standard base, 21 mm for deep base)
Diameter	102 mm
Weight	78 g ± 5% (plus 45 g for standard base)
Wire gauge for terminals	0.4 mm ² to 2.0 mm ²
Colour	Approximates to RAL9016
Material	ABS
Ingress protection	IP40/IP23 (depending on base used)

Certificates

Certified according to	EN54-7 : 2000 + A1 EN54-5 : 2000 Class A1R + A1
------------------------	--



0832/yyyy
yyyy = year of production

CE
Conventional Optical Smoke/Heat Detector
EN54-7 : 2000 + A1, EN54-5 : 2000 Class A1R + A1 5200176-00A EC-PH/A1R 58°C 2831 17 DOP-CFD044
Consilium, Marine and Safety AB Salmästaregatan 21 P.O. Box 8763 SE-402 76 GOTHENBURG Sweden

OEM Part no. 156-3766-006

Detector Bases

- For dry spaces 5200177-00A EC-BASE
- For wet spaces 46950 IP55 Base
5200178-00A EC-ADAPT IP55

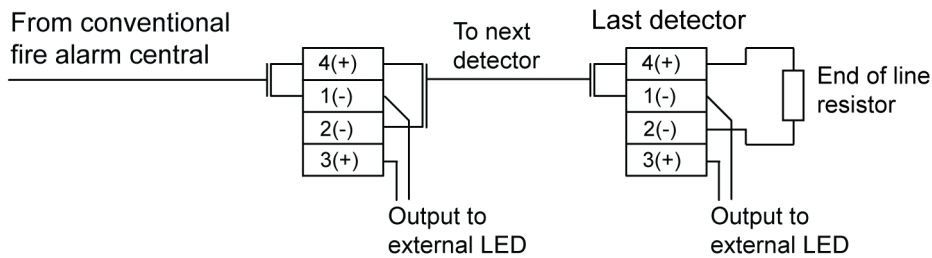
Installation

1. Place the detector into the detector base and rotate clockwise with gentle pressure until the detector drops into place.
 2. Continue rotating clockwise until the slot in the detector cover lines up with the lines moulded in the base.
- CAUTION!**
Dust covers must be removed first after Commissioning
3. After all detectors have been installed, apply power to the detector monitoring circuits.

NOTE!
Dust covers must be removed before the system can be made operational.

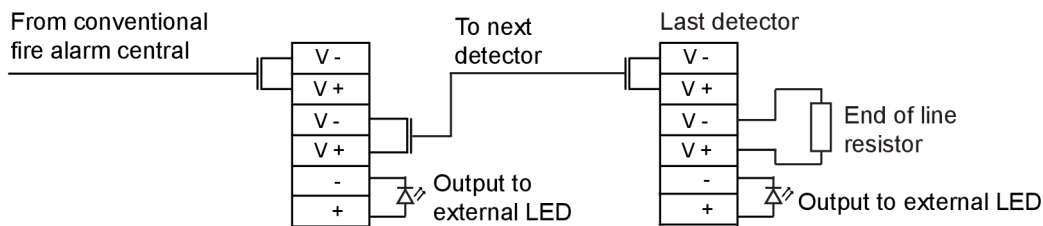
Connection

Connection for EC-BASE



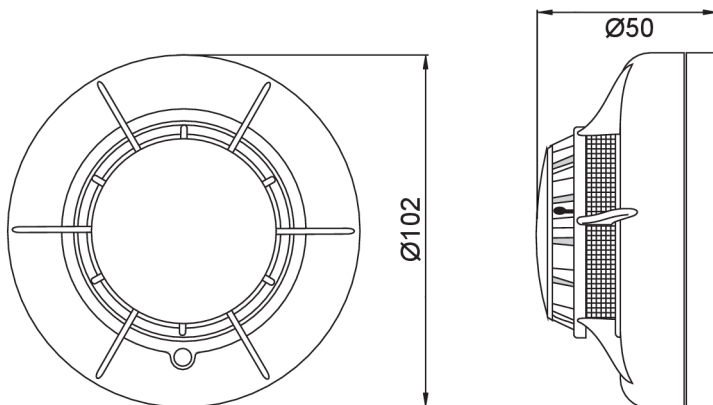
G003189

Connection for EC-ADAPT



G003545

Dimensions (mm)



G003193