



G003163

System: ServoFighter, Salwico Cargo

Conventional Smoke Detector

Salwico EC-P

Part no. 5200175-00A

General Description

The EC-P photoelectric smoke detector belongs to Salwico EC range of detectors. EC-P is a range of conventional detectors, which have been produced using the latest in manufacturing technology and supplied with an array of advanced features, making them 'better by design'.

The EC-P photoelectric smoke detector uses a state of the art optical chamber combined with an application specific integrated circuit (ASIC) to provide quick and accurate detection of fires. A combination of the unique chamber design and other technically advanced features will significantly extend the service intervals before cleaning of the detector becomes necessary.

Features

- Low profile design
- Low current draw
- Automatic drift compensation
- Operates on 12 and 24VDC Systems
- Remote alarm test feature
- Easy Maintenance
- Range of detector bases available
- Remote LED Option
- Approved to EN54 – 7:2000 (Amendment 1)

Data

Electrical Specifications

Operating voltage range	8 – 30 V DC
Maximum standby current at 25 °C	60 µA at 24 V DC
Maximum permissible alarm current	80 mA (current limited by control panel)
Alarm current at 24 V DC	Max 33 mA (with EC-BASE or EC-ADAPT)

Environmental Specifications

Operating temperature range	-30 °C to +70 °C
Ambient humidity	5% to 95% RH (non-condensing)

Mechanical Information

Height	32.5 mm (plus 9.5 mm for standard base, 21 mm for deep base)
Diameter	102 mm
Weight	75 g ± 5% (plus 45 g for standard base)
Wire gauge for terminals	0.4 mm ² to 2.0 mm ²
Colour	Approximates to RAL9016
Material	ABS
Ingress protection	IP40/IP43 (depending on base used)

Certificates

Certified according to EN54-7 : 2000 + A1



0832/yyyy

yyyy = year of production

CE
Conventional Optical Smoke Detector
EN54-7 : 2000 + A1 5200175-00A EC-P 2831 17 DOP-CFD045
Consilium, Marine and Safety AB Salmästaregatan 21 P.O. Box 8763 SE-402 76 GOTHENBURG Sweden

OEM Part no. 156-3765-006

Detector Bases

For dry spaces 5200177-00A EC-BASE
For wet spaces 46950 IP55 Base
 5200178-00A EC-ADAPT IP55

Installation

1. Place the detector into the detector base and rotate clockwise with gentle pressure until the detector drops into place.
2. Continue rotating clockwise until the slot in the detector cover lines up with the lines moulded in the base.
3. After all detectors have been installed, apply power to the detector monitoring circuits.



CAUTION!

Dust covers must be removed first after Commissioning

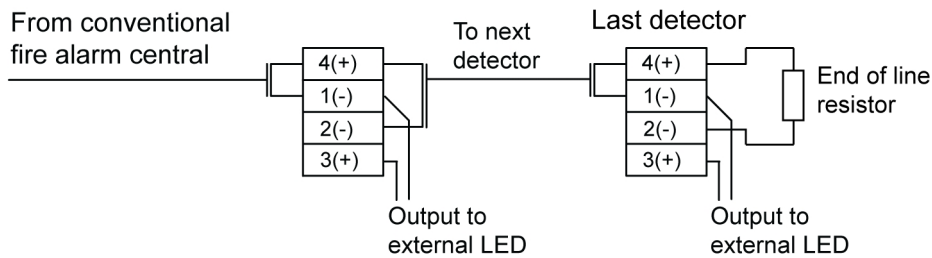


NOTE!

Dust covers must be removed before the system can be made operational.

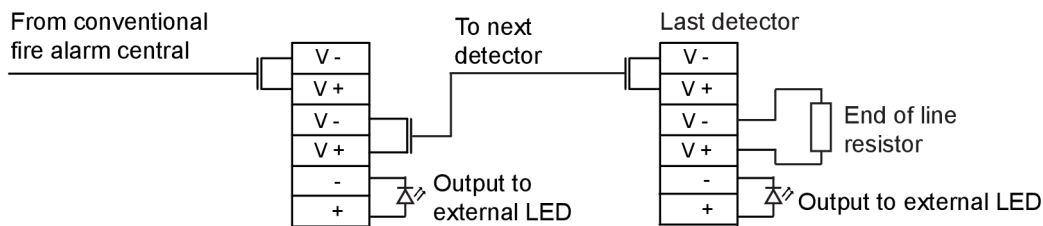
Connection

Connection for EC-BASE



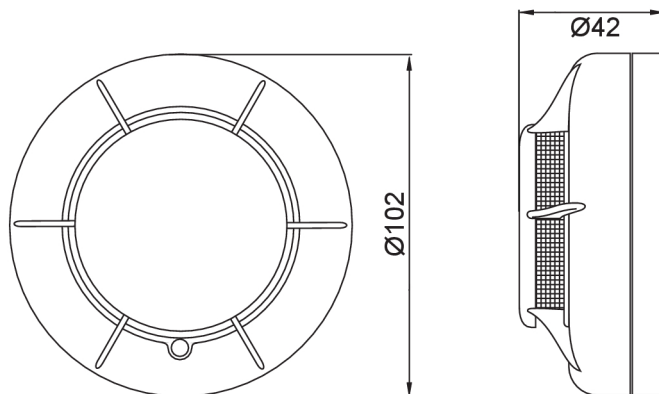
G003189

Connection for EC-ADAPT



G003545

Dimensions (mm)



G003192