



G010113

# Manual Call Point

## Salwico MCP-A SCI

### (GB)

Part no. 5200030-02B

System: Salwico Cargo, Salwico Cruise, Salwico LNG, Salwico Offshore, Salwico Ro/Pax, Salwico Workboat, Salwico Yacht, Salwico Navy, OEM Extinguish, CCP, CS3000, CS4000

## General Description

MCP-A SCI is an addressable manual call point for indoor environment, designed for Salwico fire alarm systems as specified above.

Pressing the glass causing it to crack activates the fire alarm. A protective plastic coating on the glass prevents operator injury.

An LED on the front of the call point indicates the fire alarm. The LED remains lit until the fire alarm has been reset on the fire alarm panel.

The call point can be tested with a special key, included in the delivery.

The address of the call point is set with a DIP-switch.


MCP-A SCI is developed to provide Short Circuit Protection. The Short Circuit Isolator function is fully transparent and do not require any setting.

In order to achieve IP23 the MCP-A SCI shall be mounted on a smooth surface and the cable inlet/outlet shall be secured against leakage.



### NOTE!

This product is not a compatible replacement for 5200030-01A MCP-A (GB)

Colour	Red, RAL 3001
Weight	160 g ± 5%
Cable dimension	Ø6-12 mm
Certified according to	 2531/yyyy yyyy = year of production



### NOTE!

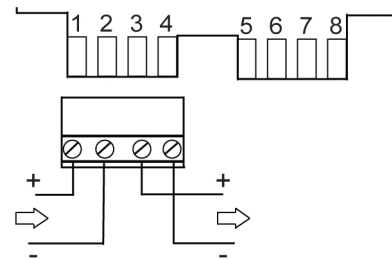
Do **not** over-tighten the fixing screws!

## Accessories

Spare glass (10pcs.)	Part no. 5200075-00A
----------------------	----------------------

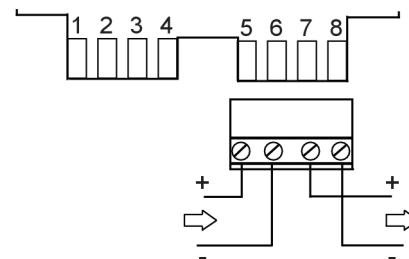
## Connection

### Connection with short-circuit protection



G003213

### Connection without short-circuit protection

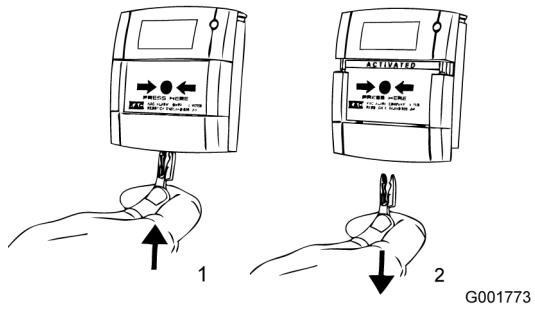


G003771

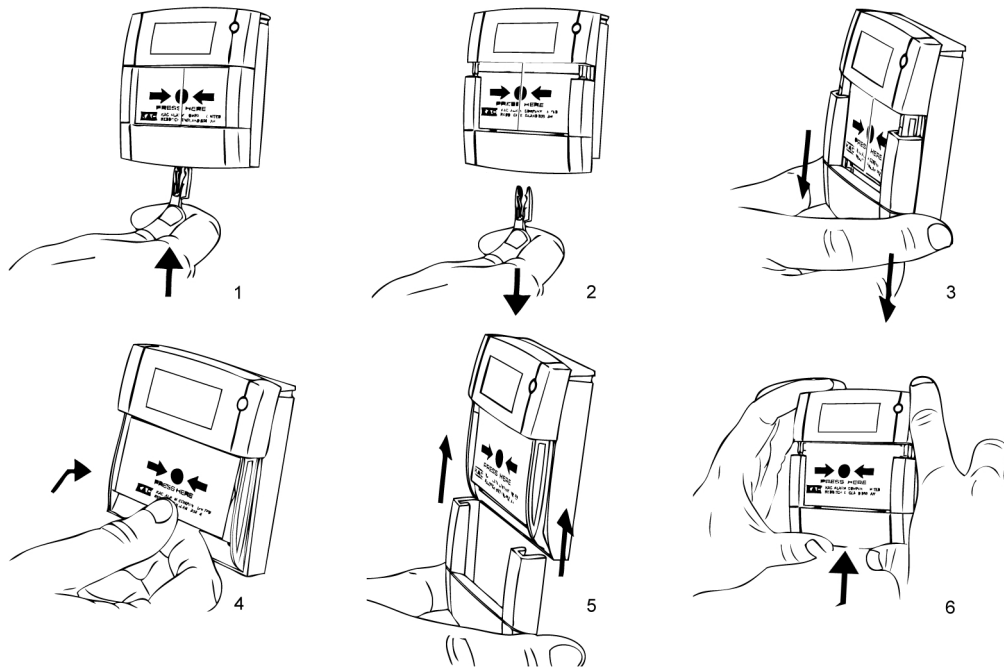
## Data

Working voltage	22-38 VDC
Supervising current	0.25 mA
Alarm current	2.5 mA
Current when short circuited	12 mA
Ingress protection	IP23D
Temperature range	-25 °C to +70 °C
Ambient humidity	0 to 95% RH
Material	PC/ABS

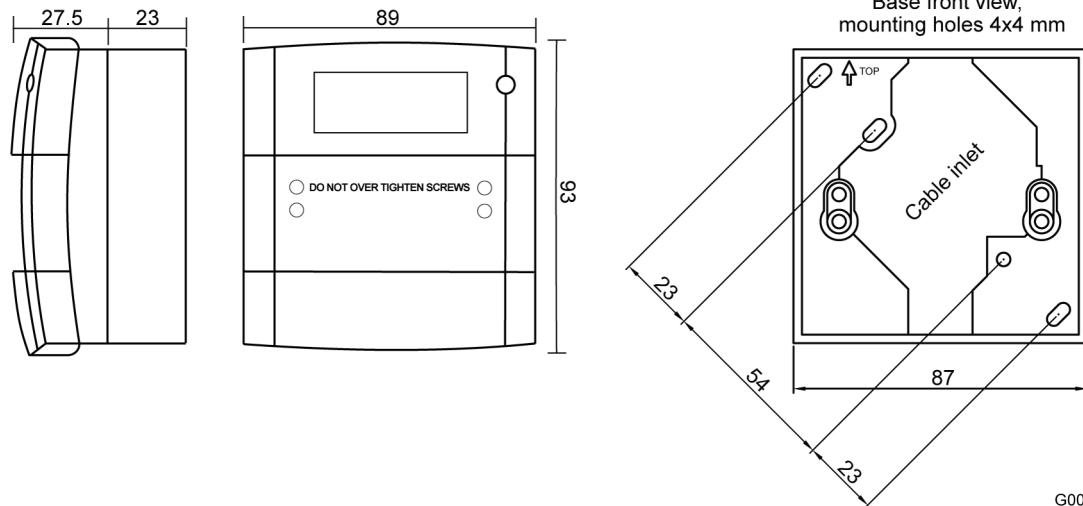
Test



Replace glass



## Dimensions (mm)



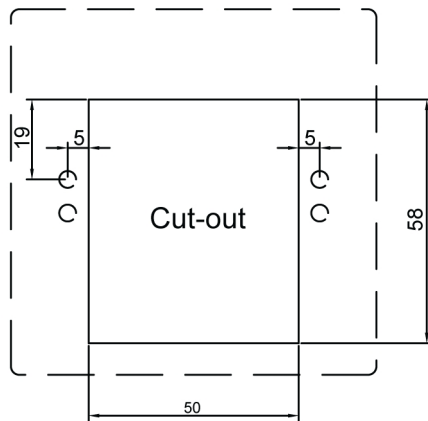
G001771



### NOTE!

Do **not** over-tighten the fixing screws, used to fasten the top part to the base! Electrical power tools are **not** recommended.

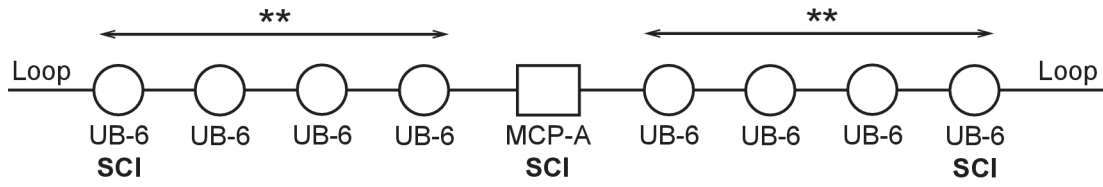
## Mounting Dimensions (mm)



G003141

## Typical use

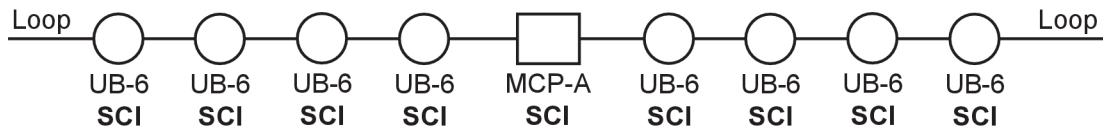
Example 1



G010118

\*\* = Maximum 32 detector heads of Type 1A/1B (according to the installation manual)

Example 2



G010119